

# 127-5A209

129A209

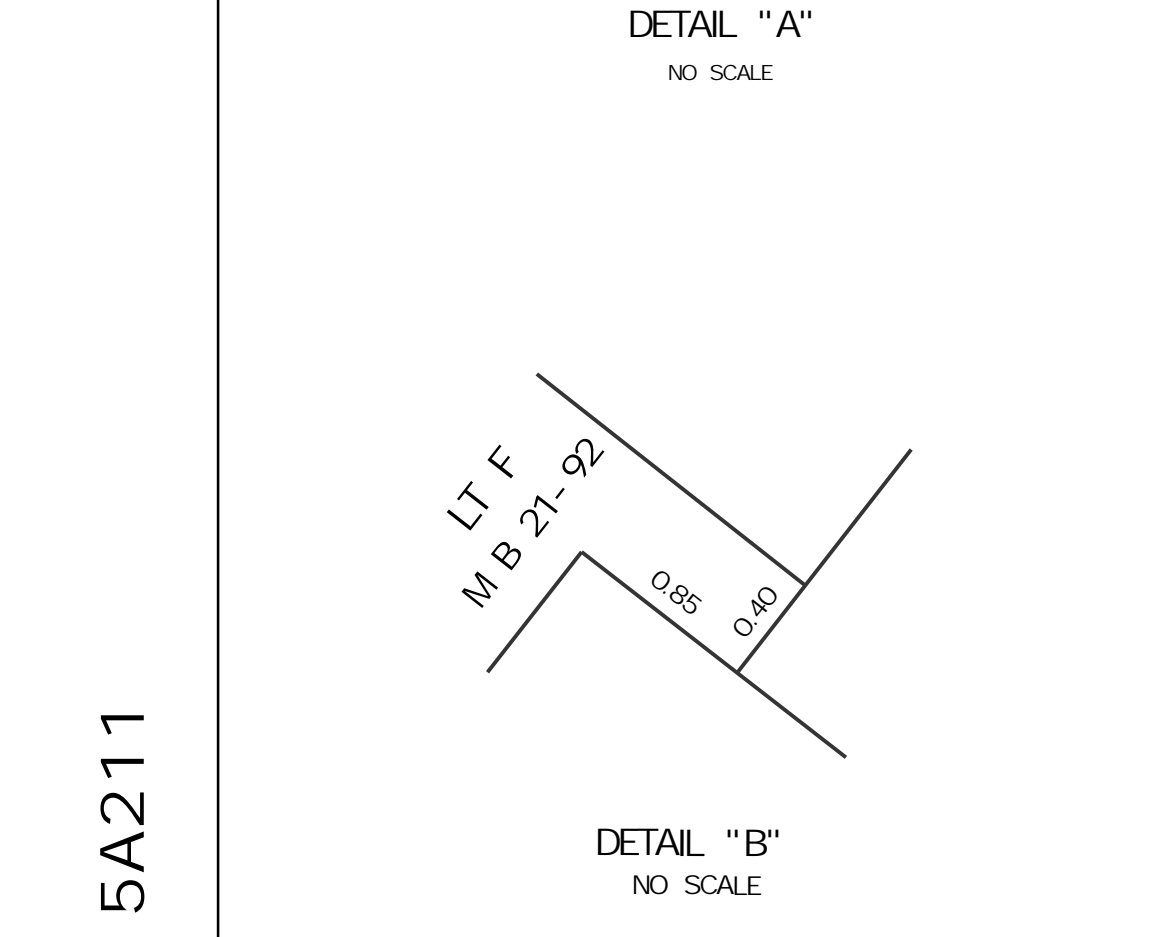
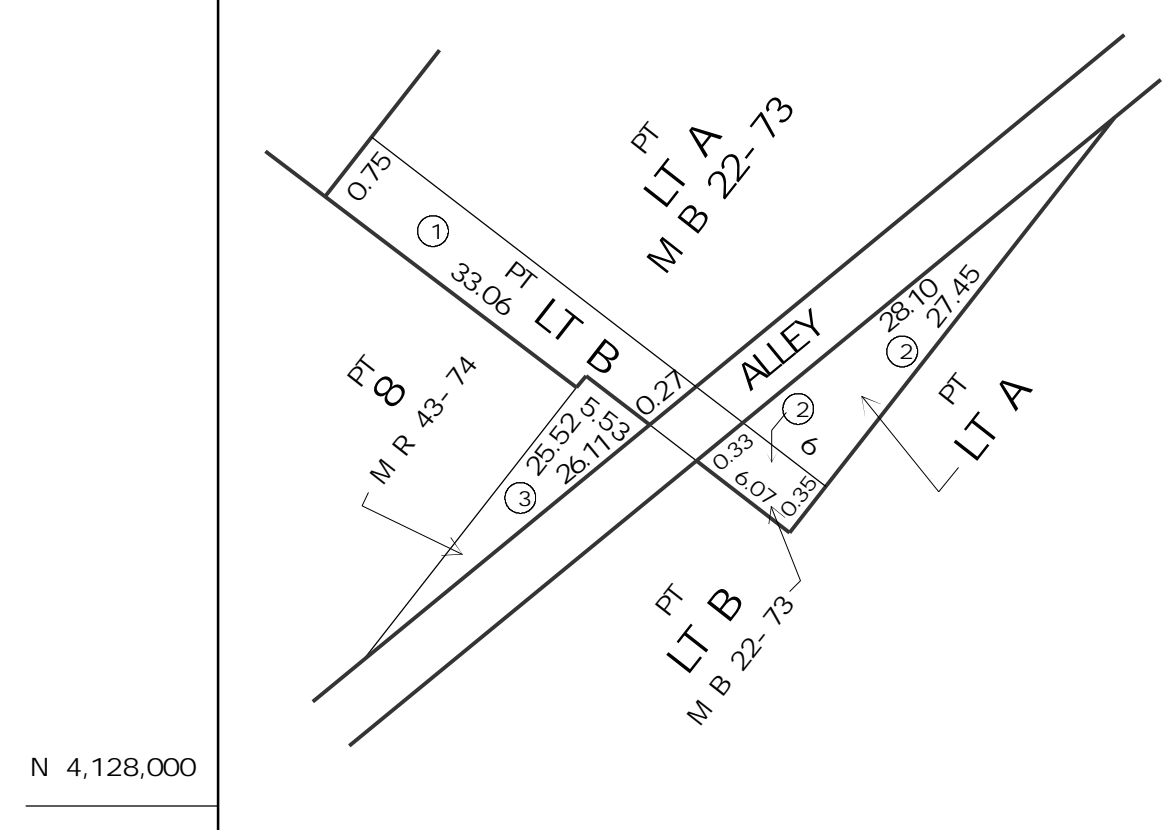


NOTE "1"  
SUBDIVISION OF LOT OF  
JUANA REYES DE RAMIREZ  
S C C 2431  
CF 136  
MAP 525

NOTE "2"  
RESURVEY OF LOT 11 AND LOT 22  
BLOCK 51 HUBER TRACT  
M R 72-12

NOTE "3"  
PROPERTY OF MRS AGNES THOMPSON  
FR  
"UNNUMBERED LT"  
M B 6-168

NOTE "4"  
MC CARTNEY'S OLIVE STREET PROPERTY  
M B 12-160



127-5A211

127-5A207

PLOT AS OF: 8/4/2022

NO PART OF THIS MAP MAY BE REPRODUCED OR TRANSMITTED IN ANY FORM OR BY ANY MEANS, ELECTRONIC OR MECHANICAL, INCLUDING PHOTOCOPYING AND RECORDING OR BY ANY INFORMATION STORAGE AND RETRIEVAL SYSTEM, WITHOUT EXPRESS PERMISSION BY WRITING BY THE CITY ENGINEER.

SCALE IN FEET

MANUALLY DRAWN  
126 B 209

DIMENSION SHOWN IN ( ) IS UNCORRECTED

CITY OF LOS ANGELES  
GARY LEE MOORE CITY ENGINEER  
BUREAU OF ENGINEERING GIS DIVISION  
ESSAM AMARAGY DIVISION MANAGER  
RAUL VIRGEN GIS CHIEF

126A209

127-5A209